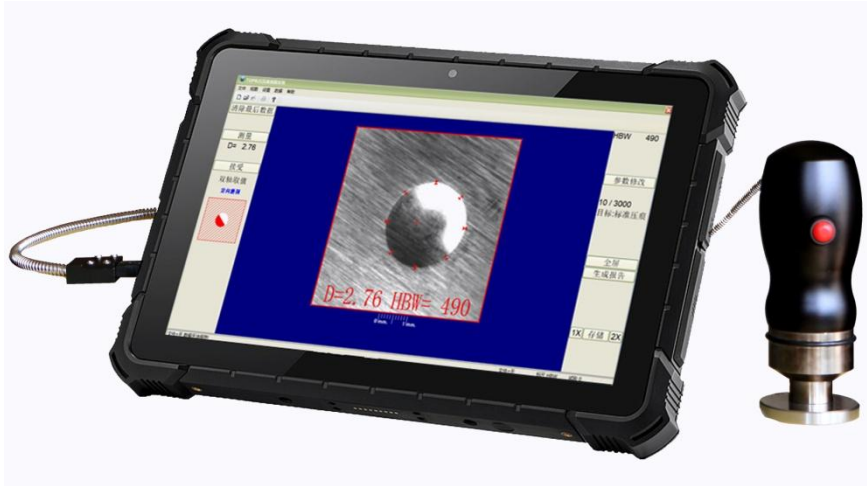


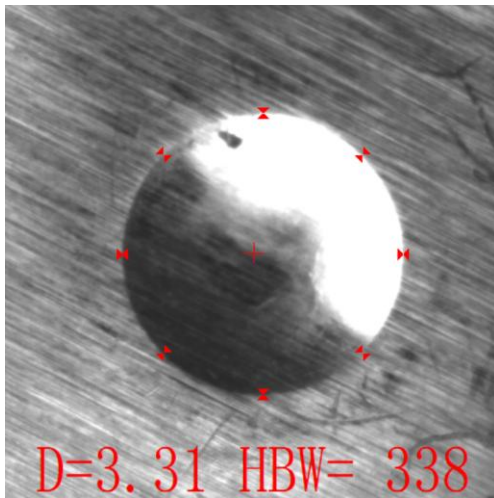
TimeScan Brinell Measuring System with CCD



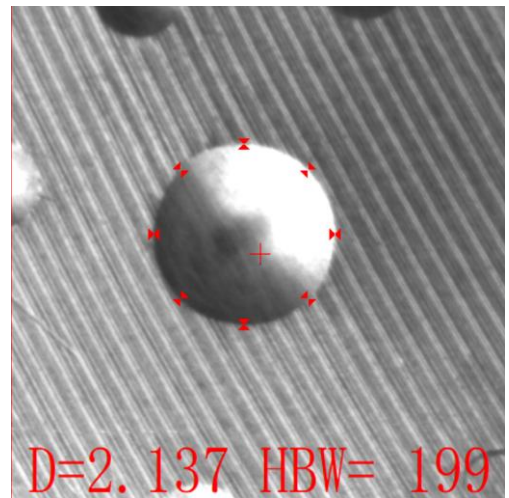
Technical features:

1. Quick and digital testing. It can measure Brinell hardness values digitally and automatically.
2. Advanced image processing algorithm ensures high robustness for capturing the indentation on rough and poor contrast surfaces automatically. As the following examples, the surface processed by turning, milling, grinding; even the sawing sections, surfaces filed by hand, or grinding by abrasion wheel, and rusty surfaces, and even damaged indentations... all could be automatically identified by TimeScan.
3. It is especially suitable for real industrial field testing due to high speed, and high recognition rate on rough surface.
4. Easy operation. Just place the CCD on the indentation and press the Start button on CCD. It is no longer need to drag the mouse to scope the boundary of the indentation. It's real automatic measurement.

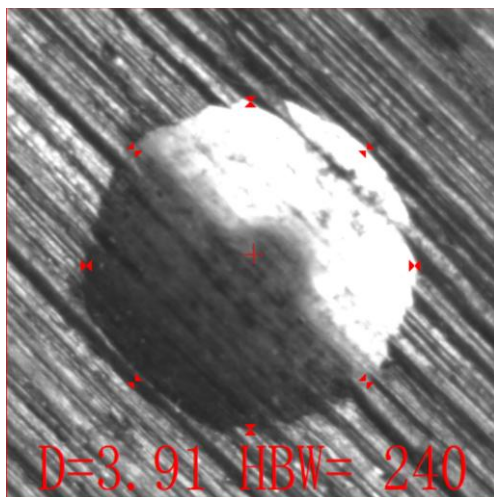
The followings are some examples of indentation measurement on the surface of samples with different roughness:



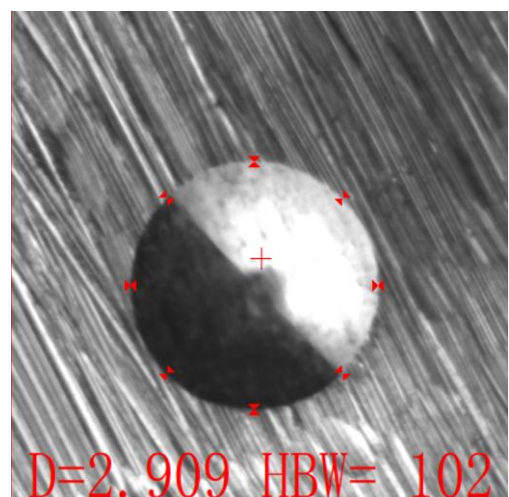
Grinding surface



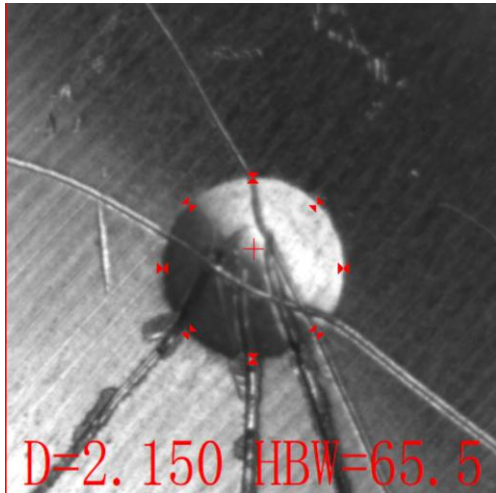
Turning surface



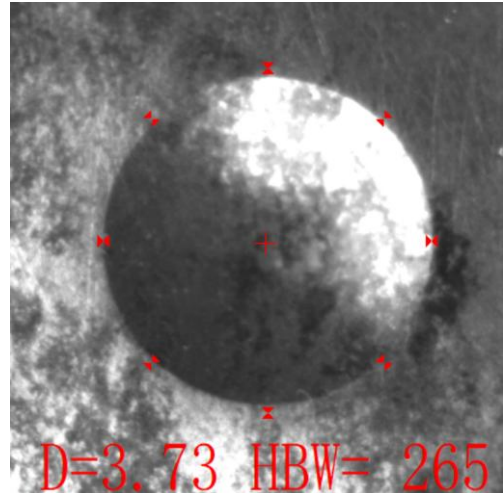
Grinding surface by abrasion wheel



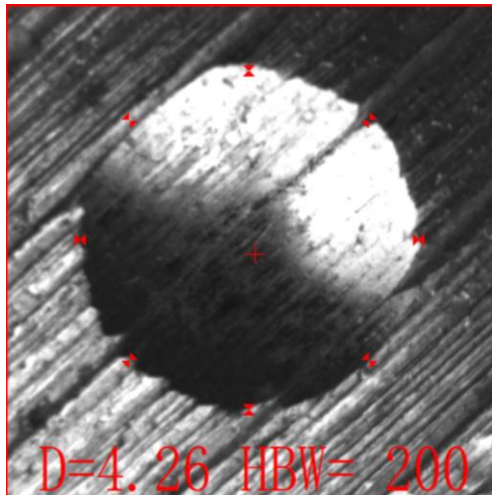
Filed surface



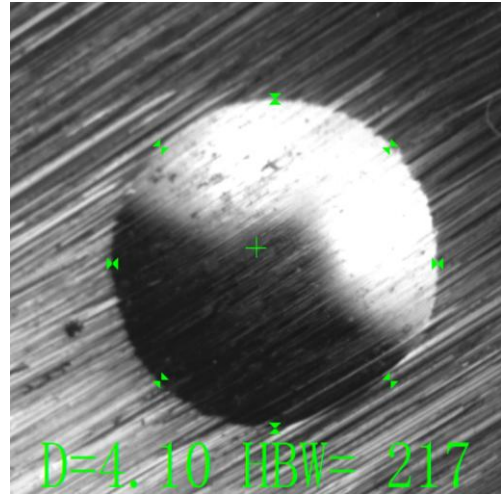
Scratched surface



Rusty surface



Sawed section



Sanding surface

Technical parameter:

Test force: 3000kgf, 2000kgf, 1500 kgf, 1000 kgf, 750 kgf, 500 kgf

250 kgf, 187.5kgf, 125kgf, 100kgf, 62.5 kgf

Indenter diameter: 10mm, 5mm, (2.5mm)

Indentation range: 1.2mm-6.0mm, (0.6mm-1.2mm need a special CCD)

Measurement resolution: Minimum resolution 0.01mm

Hardness range: 3.18HBW-658HBW

Dimension: 320mm*250mm*110mm,

Weight: 1.0kg (Packed, without computer)

Configuration:

Brinell measuring system with CCD camera * 1

Armoured USB cable * 1

Software flash disk * 1

Carrying case * 1