

# TR200 Plus Surface Roughness Tester



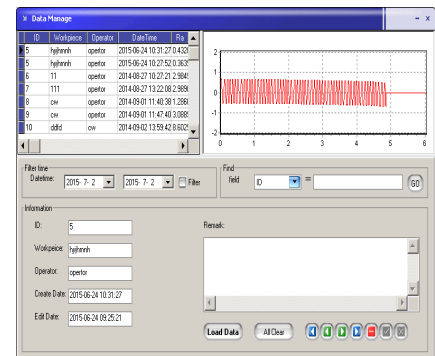
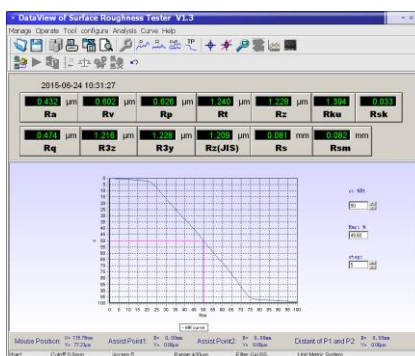
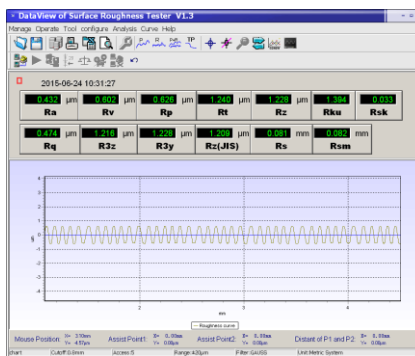
## Features:

- Electronic, digital, OLED display
- Using DSP chip to control and data processing, high speed, low power consumption;
- 20 parameters: Ra, Rz, Ry, Rq, Rt, Rp, Rpc, Rk, Rpk, Rvk, Rv, R3z, R3y, RzJIS, Rsk, Rku, Rsm, Rs, Rmax, Mr1/Mr2
- Roughness profile graphic display
- Rmr curve (material ratio, C%) display
- Standard conforms to ISO, ANSI, DIN and JIS
- Display in both Metric (um) and Imperial units (uinch)
- Built-in lithium ion rechargeable battery , Working time more than 20 hours
- Large capacity data memory, can store 100 groups of original data and wave profile.
- Real-time clock settings and display, convenient data recording and storage
- With automatic dormancy, automatic shutdown and power saving function
- Can be connected to a computer and printer;
- Optional transducers for curved surfaces, bores, inside pipe and groove, measuring platform, an extension rod and other accessories.

## Technical Specification:

<b>Roughness Parameters</b>	Ra, Rz, Ry, Rq, Rt, Rp, Rpc, Rk, Rpk, Rvk, Rv, R3z, R3y, RzJIS
	Rsk, Rku, Rsm, Rs, Rmax, Mr1/Mr2
<b>Standard</b>	ISO,ANSI,DIN,JIS
<b>Assessed Profiles</b>	Roughness profile, Material ratio profile (Rmr curve),
<b>Measuring System</b>	Both Metric um, and Imperial Uinch
<b>Measuring Range</b>	The Z axis(Vertical): 160 μm
	Ra: 0.01 – 10 um (400 uinch), Rq: 0.01 – 40um
	Rz,Ry, Rp, Rt, R3z: 0.02 – 160 um
<b>The Max./Min. driving trip</b>	17.5mm / 0.75mm
<b>Display Resolution</b>	0.001 um / 0.04 uinch
<b>Filter</b>	RC, PC-RC, Gauss, D-P
<b>Cut-off length (lr)</b>	0.25mm, 0.8mm, 2.5mm
<b>Internal storage capacity</b>	100 groups of original data
<b>Evaluation length(ln)</b>	$Ln=lr \times n \quad n=1-5$
<b>Pick up transducer</b>	Inductive, Diamond stylus with Radius 5 μm
<b>Tolerance</b>	$\leq \pm 10\%$
<b>Repeatability</b>	$\leq 6\%$
<b>Display Features:</b>	OLED display, transducer stylus position indicator, battery level indication, Measured parameters and profile showing, Rmr (T-P) curve showing
<b>Output</b>	USB
<b>Power</b>	Li-ion rechargeable battery, More than 20 working hours / per full charging
<b>Dimensions</b>	143 x 55 x 42mm
<b>Weight</b>	400g

## Software



## Standard Delivery

- TR200 Plus main unit
- TS100 + Pick-up transducer
- Software with USB cable
- Calibration certificate
- Standard test block
- Battery charger
- Steel protective support
- Manual & carrying case

## Optional Accessory

- probes for curve surface, bores and groove
- Measuring stand Platform
- Extension Rod for pick-up transducer

